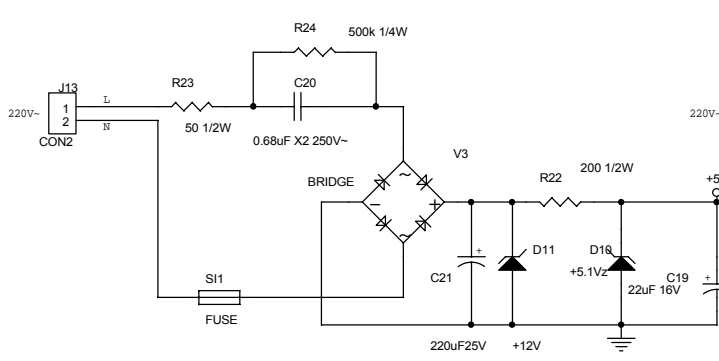
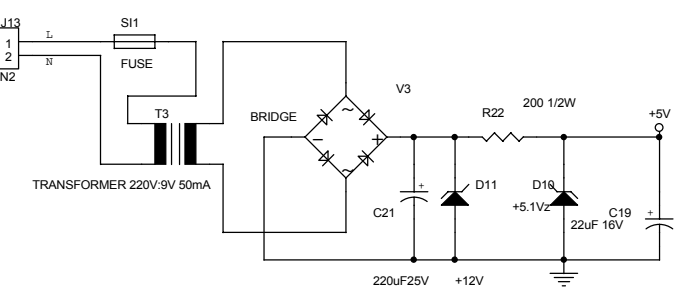


output 1 and 2 are recommended for resistive loads. For inductive load add the snubber circuit, see Motorola Thyristor Device Data Book.



XC Power Supply (not recommended for beginner!)



For beginner, try with this supply, the transformer provides galvanic isolation between HV and LV circuit.

Designed by Wichit Sirichote, kswichit@kmitl.ac.th

Title		
Time Switch V1.0		
Size	Document Number	Rev
B	<Doc>	1
Date:	Monday, August 16, 2004	Sheet 5 of 5